

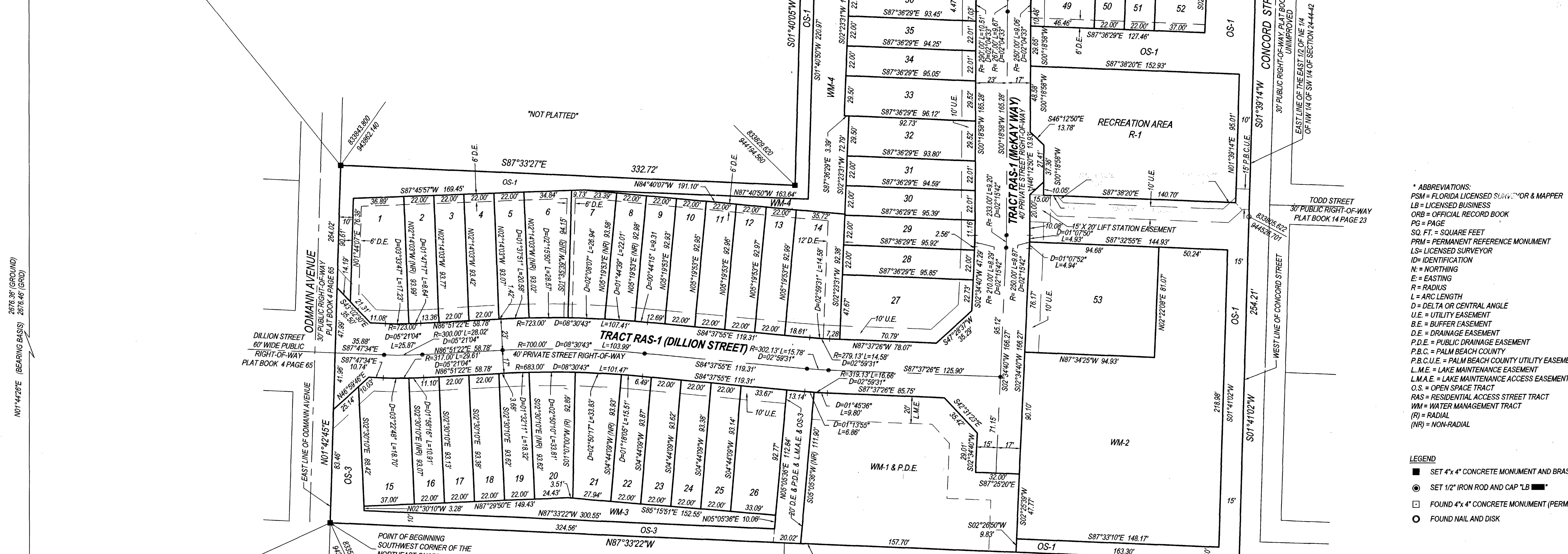
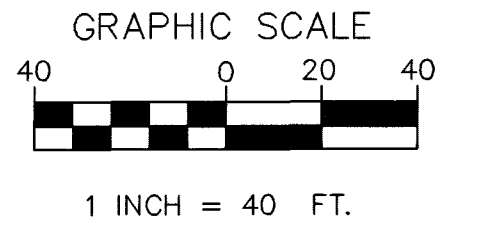
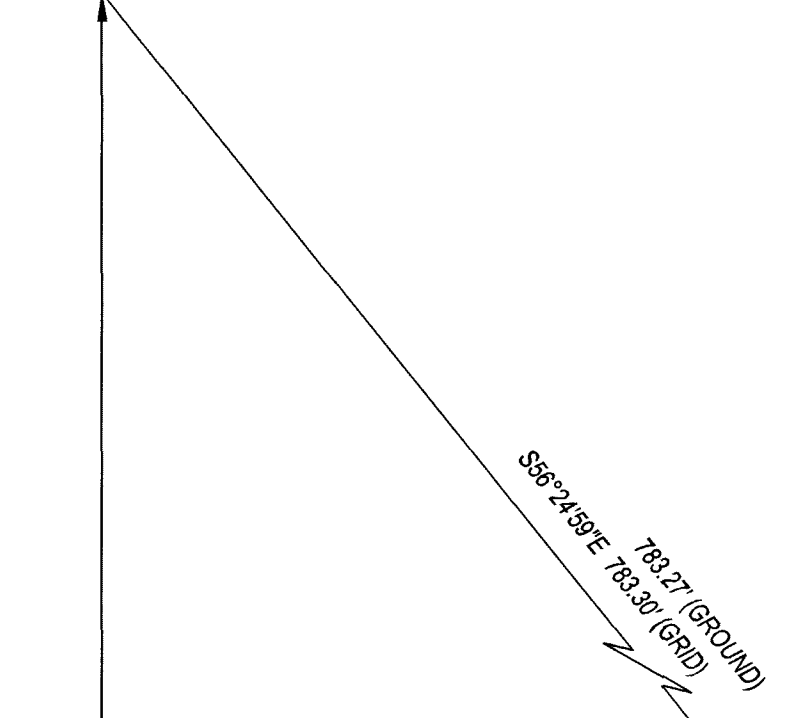
# WAGNER SUBDIVISION

A TRACT OF LAND LYING IN THE NORTHEAST QUARTER OF THE NORTHWEST QUARTER OF THE SOUTHWEST QUARTER OF SECTION 24, TOWNSHIP 44 SOUTH, RANGE 42 EAST, PALM BEACH COUNTY, FLORIDA.  
ALL LYING WITHIN SECTION 24, TOWNSHIP 44 SOUTH, RANGE 42 EAST, PALM BEACH COUNTY, FLORIDA.

SHEET 2 OF 2

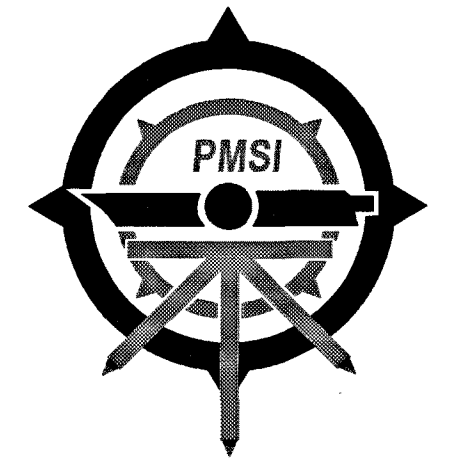
WEST QUARTER CORNER SECTION 24  
N 834277.085  
E 943209.591  
NOT FOUND  
PALM BEACH COUNTY POSITION

**NOTE ON COORDINATES, BEARINGS AND DISTANCES:**  
COORDINATES SHOWN ARE GRID. DATUM IS NAD 83, 1990 ADJUSTMENT. ZONE IS FLORIDA EAST. LINEAR UNIT IS US SURVEY FOOT. COORDINATE SYSTEM IS 1983 STATE PLANE TRANSVERSE MERCATOR PROJECTION. ALL DISTANCES ARE GROUND (UNLESS OTHERWISE NOTED). SCALE FACTOR IS 1.000036355 (GROUND DISTANCE TIMES SCALE FACTOR IS GRID DISTANCE). BEARINGS SHOWN ARE GRID DATUM, NAD 83, 1990 ADJUSTMENT, FLORIDA EAST ZONE.



- \* ABBREVIATIONS:**  
 PSM = FLORIDA LICENSED SURVEYOR & MAPPER  
 LB = LICENSED BUSINESS  
 ORB = OFFICIAL RECORD BOOK  
 PG = PAGE  
 SQ. FT. = SQUARE FEET  
 PRM = PERMANENT REFERENCE MONUMENT  
 LS = LICENSED SURVEYOR  
 ID = IDENTIFICATION  
 N = NORTHING  
 E = EASTING  
 R = RADIUS  
 L = ARC LENGTH  
 D = DELTA OR CENTRAL ANGLE  
 U.E. = UTILITY EASEMENT  
 B.E. = BUFFER EASEMENT  
 D.E. = DRAINAGE EASEMENT  
 P.D.E. = PUBLIC DRAINAGE EASEMENT  
 P.B.C. = PALM BEACH COUNTY  
 P.B.C.U.E. = PALM BEACH COUNTY UTILITY EASEMENT  
 L.M.E. = LAKE MAINTENANCE EASEMENT  
 L.M.A.E. = LAKE MAINTENANCE ACCESS EASEMENT  
 O.S. = OPEN SPACE TRACT  
 RAS = RESIDENTIAL ACCESS STREET TRACT  
 WM = WATER MANAGEMENT TRACT  
 (R) = RADIAL  
 (NR) = NON-RADIAL

- LEGEND**
- SET 4"x4" CONCRETE MONUMENT AND BRASS DISK "LB 8261"
  - ⊙ SET 1/2" IRON ROD AND CAP "LB 8261"
  - FOUND 4"x4" CONCRETE MONUMENT (PERMANENT REFERENCE MONUMENT)
  - FOUND NAIL AND DISK



**PRINCIPAL MERIDIAN SURVEYING INC.**  
4546 CAMBRIDGE STREET  
WEST PALM BEACH, FL 33415  
PHONE 833.478.7764 / FAX 561.478.1094  
WWW.PMSURVEYING.NET  
JOB # 19070506

**\* PREPARING SURVEYOR & MAPPER'S STATEMENT:**  
THIS INSTRUMENT WAS PREPARED BY DOUG WALKER, P.S.M. # 7211, STATE OF FLORIDA, IN AND FOR THE OFFICES OF PRINCIPAL MERIDIAN SURVEYING, INC., AT 4546 CAMBRIDGE STREET, WEST PALM BEACH, FLORIDA, 33415. CERTIFICATE OF AUTHORIZATION # 8261

SOUTHWEST CORNER SECTION 24  
N 831601.862  
E 943128.294  
NOT FOUND  
PALM BEACH COUNTY POSITION

SOUTH QUARTER CORNER SECTION 24  
N 831485.074  
E 945792.133  
NOT FOUND  
PALM BEACH COUNTY POSITION